

**SDHA Antibody (C-term)**  
**Affinity Purified Rabbit Polyclonal Antibody (Pab)**  
**Catalog # AP20458b****Specification**

---

**SDHA Antibody (C-term) - Product Information**

Application	IHC-P, WB,E
Primary Accession	<a href="#">P31040</a>
Other Accession	<a href="#">Q920L2</a> , <a href="#">Q6PA58</a>
Reactivity	Human
Predicted	Xenopus, Rat
Host	Rabbit
Clonality	Polyclonal
Isotype	Rabbit IgG
Antigen Region	577-605

**SDHA Antibody (C-term) - Additional Information****Gene ID** 6389**Other Names**

Succinate dehydrogenase [ubiquinone] flavoprotein subunit, mitochondrial, Flavoprotein subunit of complex II, Fp, SDHA, SDH2, SDHF

**Target/Specificity**

This SDHA antibody is generated from rabbits immunized with a KLH conjugated synthetic peptide between 577-605 amino acids from the C-terminal region of human SDHA.

**Dilution**

IHC-P~~1:25

WB~~1:1000

E~~Use at an assay dependent concentration.

**Format**

Purified polyclonal antibody supplied in PBS with 0.09% (W/V) sodium azide. This antibody is purified through a protein A column, followed by peptide affinity purification.

**Storage**

Maintain refrigerated at 2-8°C for up to 2 weeks. For long term storage store at -20°C in small aliquots to prevent freeze-thaw cycles.

**Precautions**

SDHA Antibody (C-term) is for research use only and not for use in diagnostic or therapeutic procedures.

**SDHA Antibody (C-term) - Protein Information****Name** SDHA

**Synonyms** SDH2, SDHF

**Function** Flavoprotein (FP) subunit of succinate dehydrogenase (SDH) that is involved in complex II of the mitochondrial electron transport chain and is responsible for transferring electrons from succinate to ubiquinone (coenzyme Q) (PubMed:[10746566](#), PubMed:[24781757](#)). SDH also oxidizes malate to the non-canonical enol form of oxaloacetate, enol- oxaloacetate (By similarity). Enol-oxaloacetate, which is a potent inhibitor of the succinate dehydrogenase activity, is further isomerized into keto-oxaloacetate (By similarity). Can act as a tumor suppressor (PubMed:[20484225](#)).

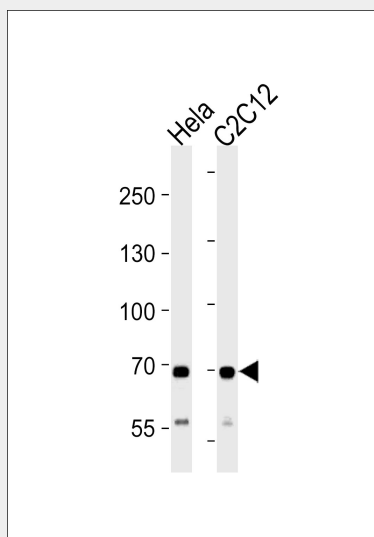
**Cellular Location**

Mitochondrion inner membrane; Peripheral membrane protein; Matrix side

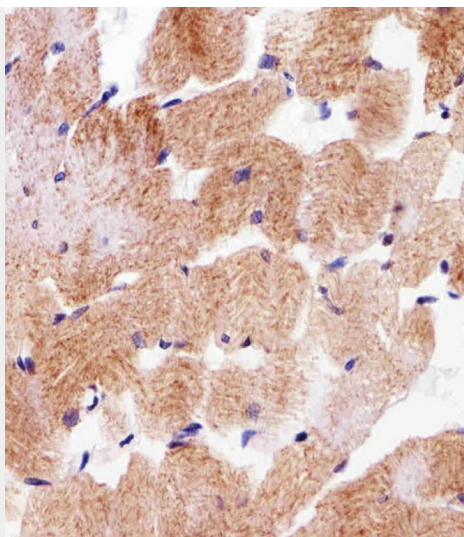
**SDHA Antibody (C-term) - Protocols**

Provided below are standard protocols that you may find useful for product applications.

- [Western Blot](#)
- [Blocking Peptides](#)
- [Dot Blot](#)
- [Immunohistochemistry](#)
- [Immunofluorescence](#)
- [Immunoprecipitation](#)
- [Flow Cytometry](#)
- [Cell Culture](#)

**SDHA Antibody (C-term) - Images**

SDHA Antibody (C-term) (Cat. #AP20458b) western blot analysis in HeLa and mouse C2C12 cell line lysates (35ug/lane). This demonstrates the SDHA antibody detected the SDHA protein (arrow).



Immunohistochemical analysis of paraffin-embedded H. skeletal muscle section using SDHA Antibody (C-term)(Cat#AP20458B). AP20458B was diluted at 1:25 dilution. A undiluted biotinylated goat polyvalent antibody was used as the secondary, followed by DAB staining.

#### **SDHA Antibody (C-term) - Background**

Flavoprotein (FP) subunit of succinate dehydrogenase (SDH) that is involved in complex II of the mitochondrial electron transport chain and is responsible for transferring electrons from succinate to ubiquinone (coenzyme Q). Can act as a tumor suppressor.

#### **SDHA Antibody (C-term) - References**

- Hirawake H., et al. J. Biochem. 116:221-227(1994).  
Morris A.A.M., et al. Biochim. Biophys. Acta 1185:125-128(1994).  
Parfait B., et al. Hum. Genet. 106:236-243(2000).  
Ota T., et al. Nat. Genet. 36:40-45(2004).  
Mural R.J., et al. Submitted (JUL-2005) to the EMBL/GenBank/DDBJ databases.